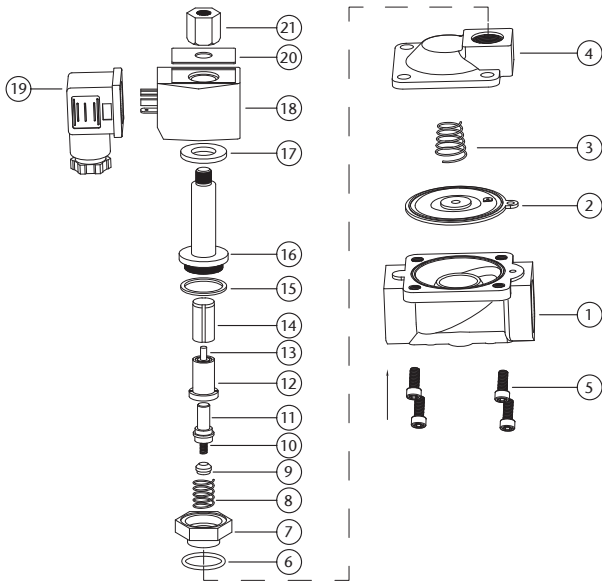


Parts Diagram



N.	Component	Material
1	Valve Body	Brass/Stainless Steel 316
2	Diaphragm	NBR/EPDM/Viton
3	Diaphragm Spring	Stainless Steel 304
4	Valve Cover	Brass/Stainless Steel 316
5	Bolt	Stainless Steel 302
6	O Ring	NBR/EPDM/Viton
7	Midbody	Brass/Stainless Steel 316
8	Spring	Stainless Steel 304
9	Mandril Seal	NBR/EPDM/Viton
10	Spring	Stainless Steel 304
11	Mandril	Stainless Steel 304
12	Fixed Amature	Stainless Steel 1J117
13	Pole	Stainless Steel 304
14	Moving Amature	Stainless Steel 1J117
15	Plunger Tube Seal	PTFE
16	Plunger Tube Unit	Stainless Steel 304 + 1J117
17	Baseplate	Plated Steel
18	Coil	Enamelled Wire
19	Plug	Nylon
20	Plate	Aluminium
21	Lock Nut	Stainless Steel 302

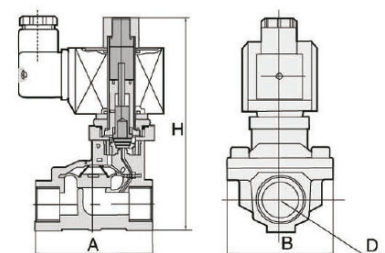
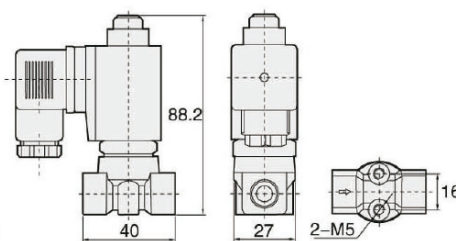
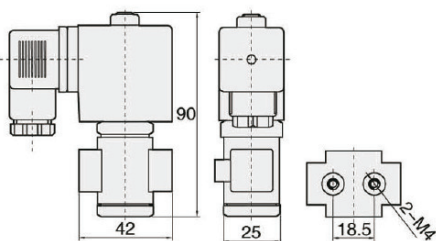
Available in 240VAC, 110VAC
12VDC, 24VDC, 24VAC

Main Dimensions

Orifice: 1mm to 2.5mm
Port: 1/8" & 1/4"

Orifice: 3mm
Port: 1/8" & 1/4"

Large Orifice
See Table Opposite



2/2 Solenoid Valve Normally Open

Valve Specification & Order Code

Port Size (G)	Orifice	CV Value	Pressure Difference (Bar)				Max. Temp. (°C)	VA AC 220V	W DC 24V	220VAC 50/60Hz		Main Dimension AxBxH	
			Min.	Max. Working Pressure						Brass	316 Stainless Steel		
				Air / Gas	Water / Hot Liquid	Light Oil ≤20CST							
1/8"	1	0.04	0	30	30	25	80	22	13	SLP06E2-1LH	SLP06E2-1LS1H		
	1	0.04	0	30	30	-	120	22	13	SLP06EE2-1LH	SLP06EE2-1LS1H		
	1	0.04	0	30	30	25	120	22	13	SLP06VE2-1LH	SLP06VE2-1LS1H		
	1.5	0.09	0	20	20	15	80	22	13	SLP06E2-1.5LH	SLP06E2-1.5LS1H		
	1.5	0.09	0	20	20	-	120	22	13	SLP06EE2-1.5LH	SLP06EE2-1.5LS1H		
	1.5	0.09	0	20	20	15	120	22	13	SLP06VE2-1.5LH	SLP06VE2-1.5LS1H		
	2.5	0.2	0	15	15	12	80	22	13	SLP06E2-2.5LH	SLP06E2-2.5LS1H		
	2.5	0.2	0	15	15	-	120	22	13	SLP06EE2-2.5LH	SLP06EE2-2.5LS1H		
	2.5	0.2	0	15	15	12	120	22	13	SLP06VE2-2.5LH	SLP06VE2-2.5LS1H		
1/4"	1	0.04	0	30	30	25	80	22	13	SLP08E2-1LH	SLP08E2-1LS1H		
	1	0.04	0	30	30	-	120	22	13	SLP08EE2-1LH	SLP08EE2-1LS1H		
	1	0.04	0	30	30	25	120	22	13	SLP08VE2-1LH	SLP08VE2-1LS1H		
	1.5	0.09	0	20	20	15	80	22	13	SLP08E2-1.5LH	SLP08E2-1.5LS1H		
	1.5	0.09	0	20	20	-	120	22	13	SLP08EE2-1.5LH	SLP08EE2-1.5LS1H		
	1.5	0.09	0	20	20	15	120	22	13	SLP08VE2-1.5LH	SLP08VE2-1.5LS1H		
	2.5	0.2	0	15	15	12	80	22	13	SLP08E2-2.5LH	SLP08E2-2.5LS1H		
	2.5	0.2	0	15	15	-	120	22	13	SLP08EE2-2.5LH	SLP08EE2-2.5LS1H		
	2.5	0.2	0	15	15	12	120	22	13	SLP08VE2-2.5LH	SLP08VE2-2.5LS1H		
3/8"	13	4.5	0.5	8	8	7	80	33	32	SLP10E2-13LH	SLP10E2-13LS1H	66x48x124	
	13	4.5	0.5	8	8		120	33	32	SLP10EE2-13LH	SLP10EE2-13LS1H	66x48x124	
	13	4.5	0.5	8	8	7	120	33	32	SLP10VE2-13LH	SLP10VE2-13LS1H	66x48x124	
	1/2"	13	4.5	0.5	8	8	7	80	33	32	SLP15E2-13LH	SLP15E2-13LS1H	66x48x124
		13	4.5	0.5	8	8		120	33	32	SLP15EE2-13LH	SLP15EE2-13LS1H	66x48x124
		13	4.5	0.5	8	8	7	120	33	32	SLP15VE2-13LH	SLP15VE2-13LS1H	66x48x124
	3/4"	20	7.6	0.5	8	8	7	80	33	32	SLP-20E2H	SLP-20E2S1H	75x58x130
		20	7.6	0.5	8	8		120	33	32	SLP-20EE2H	SLP-20EE2S1H	75x58x130
		20	7.6	0.5	8	8	7	120	33	32	SLP-20VE2H	SLP-20VE2S1H	75x58x130
1"	25	12	0.5	8	8	7	80	33	32	SLP-20E2H	SLP-25E2S1H	96x70x143	
	25	12	0.5	8	8		120	33	32	SLP-25EE2H	SLP-25EE2S1H	96x70x143	
	25	12	0.5	8	8	7	120	33	32	SLP-25VE2H	SLP-25VE2S1H	96x70x143	
1.1/4"	35	22	0.5	8	8	7	80	33	32	SLP-35E2H	SLP-35E2S1H	131x96x158	
	35	22	0.5	8	8		120	33	32	SLP-35EE2H	SLP-35EE2S1H	131x96x158	
	35	22	0.5	8	8	7	120	33	32	SLP-35VE2H	SLP-35VE2S1H	131x96x158	
1.1/2"	40	30	0.5	8	8	7	80	33	32	SLP-40E2H	SLP-40E2S1H	131x96x158	
	40	30	0.5	8	8		120	33	32	SLP-40EE2H	SLP-40EE2S1H	131x96x158	
	40	30	0.5	8	8	7	120	33	32	SLP-40VE2H	SLP-40VE2S1H	131x96x158	
2"	50	48	0.5	8	8	7	80	33	32	SLP-50E2H	SLP-50E2S1H	165x120x179	
	50	48	0.5	8	8		120	33	32	SLP-50EE2H	SLP-50EE2S1H	165x120x179	
	50	48	0.5	8	8	7	120	33	32	SLP-50VE2H	SLP-50VE2S1H	165x120x179	
1" Flange Connection	25	12	0.5	8	8	7	80	33	32	--	SLPFE2-25LS1H	134x110x172	
	25	12	0.5	8	8		120	33	32	--	SLPFEE2-25LS1H	134x110x172	
	25	12	0.5	8	8	7	120	33	32	--	SLPFVE2-25LS1H	134x110x172	
1 1/4" Flange Connection	35	22	0.5	8	8	7	80	33	32	--	SLPFE2-35LS1H	160x135x187	
	35	22	0.5	8	8		120	33	32	--	SLPFEE2-35LS1H	160x135x187	
	35	22	0.5	8	8	7	120	33	32	--	SLPFVE2-35LS1H	160x135x187	
1 1/2" Flange Connection	40	30	0.5	8	8	7	80	33	32	--	SLPFE2-40LS1H	160x145x192	
	40	30	0.5	8	8		120	33	32	--	SLPFEE2-40LS1H	160x145x192	
	40	30	0.5	8	8	7	120	33	32	--	SLPFVE2-40LS1H	160x145x192	
2" Flange Connection	50	48	0.5	8	8	7	80	33	32	--	SLPFE2-50LS1H	200x160x219	
	50	48	0.5	8	8		120	33	32	--	SLPFEE2-50LS1H	200x160x219	
	50	48	0.5	8	8	7	120	33	32	--	SLPFVE2-50LS1H	200x160x219	

Please refer to our price list for stocked items

Dimensions in mm

This data sheet is designed as a guide and should not be regarded as wholly accurate in every detail. We reserve the right to amend the specification of any product without notice.